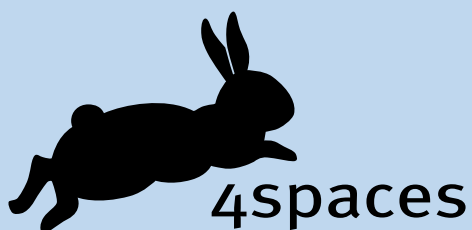
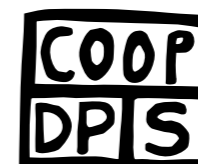


COOP  
DP S

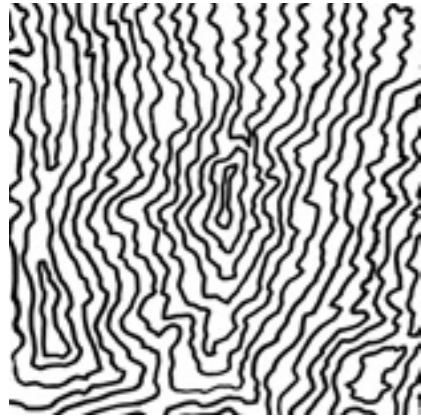


CoopDPS is a new name in design. Even if the idea and the energy behind it has been taking shape in the minds of two designers for quite some time, it was the opportunity to create a collection of textiles with 4Spaces that was the decisive moment to formally recognise this new cooperation between Nathalie Du Pasquier and George Sowden.

Collection 1 - The Post Crisis Collection

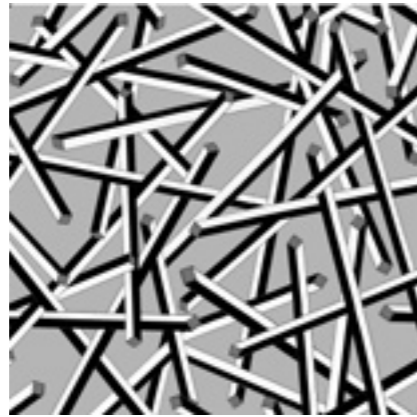


# Curtain - Tulle



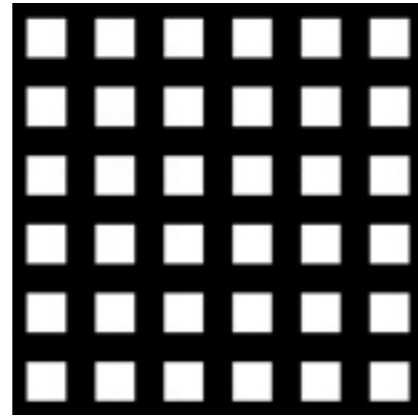
Earth

Rapp. / Rep. vert.: 42 cm - 16.5"  
Rapp. / Rep. horiz.: 33 cm - 13"



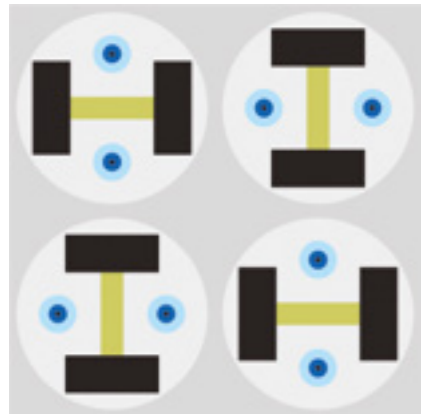
Dallas BW

Rapp. / Rep. vert.: 85.4 cm - 33.6"  
Rapp. / Rep. horiz.: 120 cm - 47"



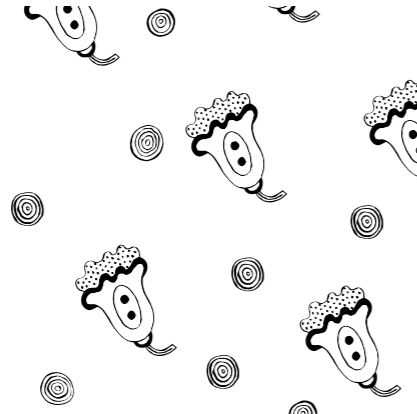
Gate

Rapp. / Rep. vert.: 17 cm - 6.7"  
Rapp. / Rep. horiz.: 17 cm - 6.7"



Cubic Face

Rapp. / Rep. vert.: 43 cm - 17"  
Rapp. / Rep. horiz.: 43 cm - 17"



Provence

Rapp. / Rep. vert.: 240 cm - 94.5"  
Rapp. / Rep. horiz.: 240 cm - 94.5"

100% Polyester FR  
Breite • Width 300 cm – 118"  
Gewicht • Weight 48 g/m2 – 1.7 oz/m2





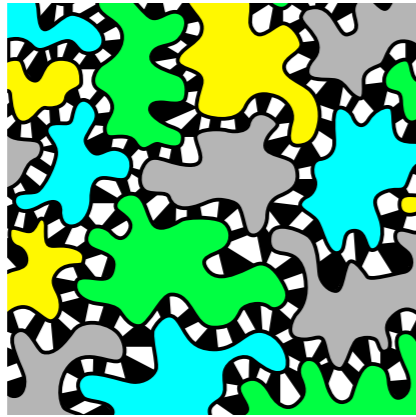


# Curtain - Plastic fantastic



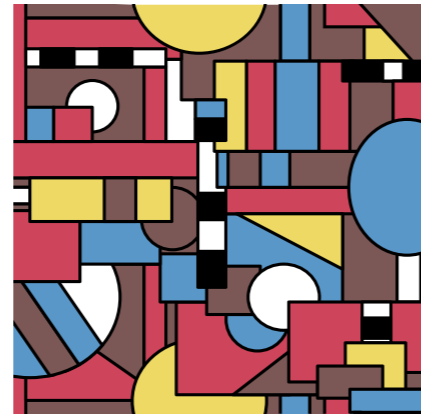
New Orleans

Rapp. / Rep. vert.: 29.7 cm - 11.7"  
Rapp. / Rep. horiz.: 42 cm - 16.5"



New York

Rapp. / Rep. vert.: 94 cm - 37"  
Rapp. / Rep. horiz.: 150 cm - 59"



Brooklyn

Rapp. / Rep. vert.: 60 cm - 23.6"  
Rapp. / Rep. horiz.: 60 cm - 23.6"

100% Polyester FR  
Breite • Width 330 cm – 130"  
Gewicht • Weight 24 g/m2 – 0.85 oz/m2

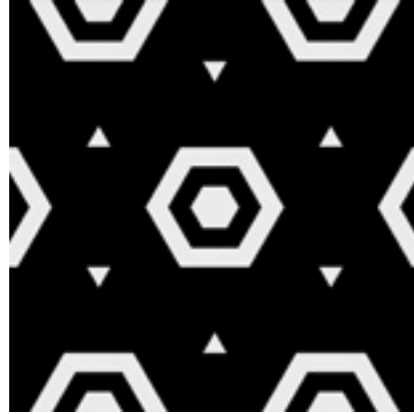


# Upholstery



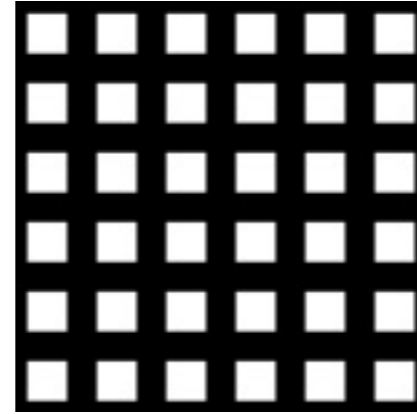
Earth

Rapp. / Rep. vert.: 38.5 cm - 15"  
Rapp. / Rep. horiz.: 32 cm - 12.6"



Europa

Rapp. / Rep. vert.: 3.8 cm - 1.5"  
Rapp. / Rep. horiz.: 4 cm - 1.6"



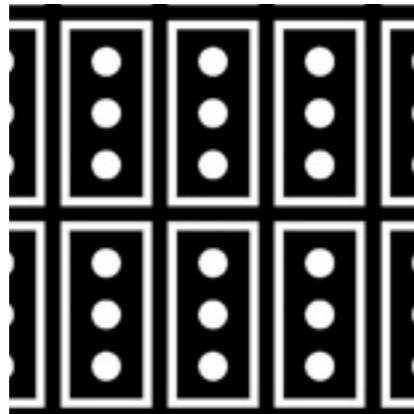
Gate

Rapp. / Rep. vert.: 3 cm - 1.2"  
Rapp. / Rep. horiz.: 3 cm - 1.2"



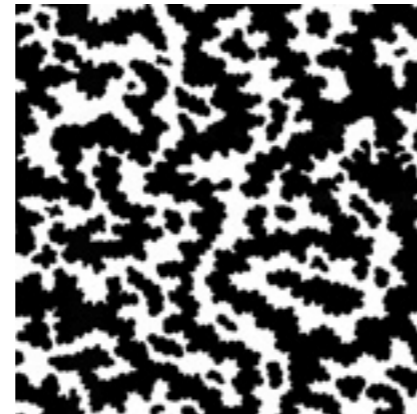
Brazil

Rapp. / Rep. vert.: 15.4 cm - 6"  
Rapp. / Rep. horiz.: 16 cm - 6.3"



Japan

Rapp. / Rep. vert.: 14 cm - 5.5"  
Rapp. / Rep. horiz.: 7 cm - 2.75"



Africa

Rapp. / Rep. vert.: 31.5 cm - 12.4"  
Rapp. / Rep. horiz.: 24.5 cm - 9.6"



Mars

Rapp. / Rep. vert.: 48 cm - 18.9"  
Rapp. / Rep. horiz.: 31 cm - 12.2"

Dies ist ein Climatex® Dualcycle™ Jacquard Möbelstoff für ein temperatur- und feuchtigkeits-regulierten Sitzkomfort, geeignet für im privaten und öffentlichen Bereich, sowie Auto- und Transportindustrie. Cradle to Cradle zertifiziert, mindestens 100'000 Martindale Abrieb.

This is a Climatex® Dualcycle™ Jacquard upholstery textile for climate-controlled seating suitable for home, office, automotive and transportation. Cradle to Cradle certified, min. 100'000 Martindale rubs.

Breite • Width 141cm (139cm) – 55.5" (54.7")

Gewicht • Weight ca. 600 g/m<sup>2</sup> – 21 oz/m<sup>2</sup>

Wool / Polyamid / CV FR

Passes most FR tests

Toxic free and biodegradable



...the possibilities  
of patterns are  
infinite.

4Spaces GmbH  
Seestrasse 86  
8712 Staefa Zürich  
Switzerland

Tel: +41 43 366 8945

info@4spaces.ch  
www.4spaces.ch

Credits:  
Photography on location  
Alice Fiorilli [www.alicefiorilli.com](http://www.alicefiorilli.com)  
Photography Studio  
4Spaces Design Team / Nora Lüdin

Concept:  
4Spaces Design Team



