

COOP
DPIS



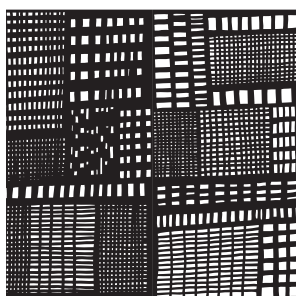
‘Wallpaper that was covering the room where we slept as children we remember more than the rest.

And now, they say, there are several reasons why wallpaper is coming back, but did it ever really go away?

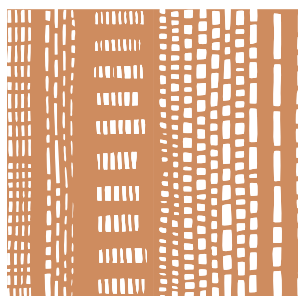
That would be a long answer and we are not anthropologists – but we are designing wallpapers to decorate our rooms anew.’



Wallpaper



Assab One - WP



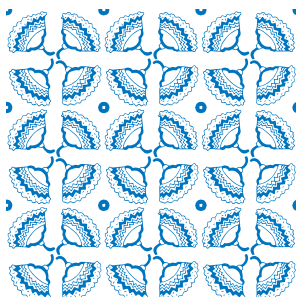
Assab Two - WP



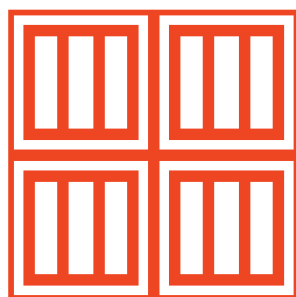
Flower XL - WP



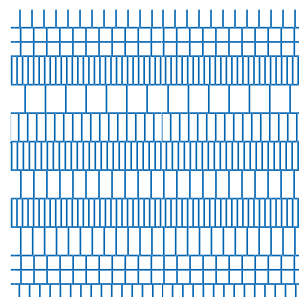
Flower XS - WP



Mosaic - WP



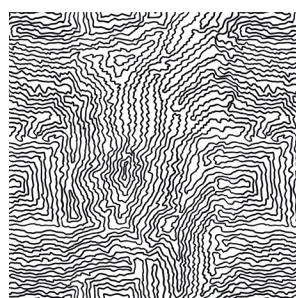
Bricks - WP



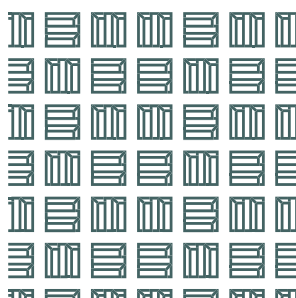
Air - WP



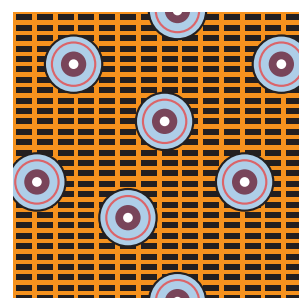
Key - WP



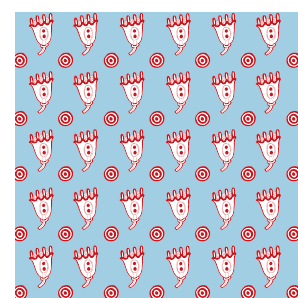
Earth - WP



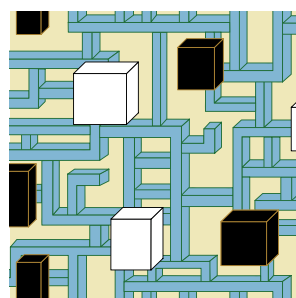
Pieces - WP



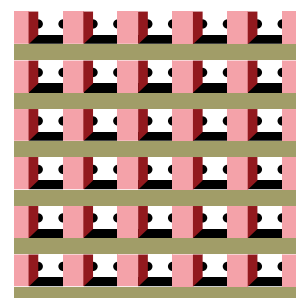
Electric Kitchen - WP



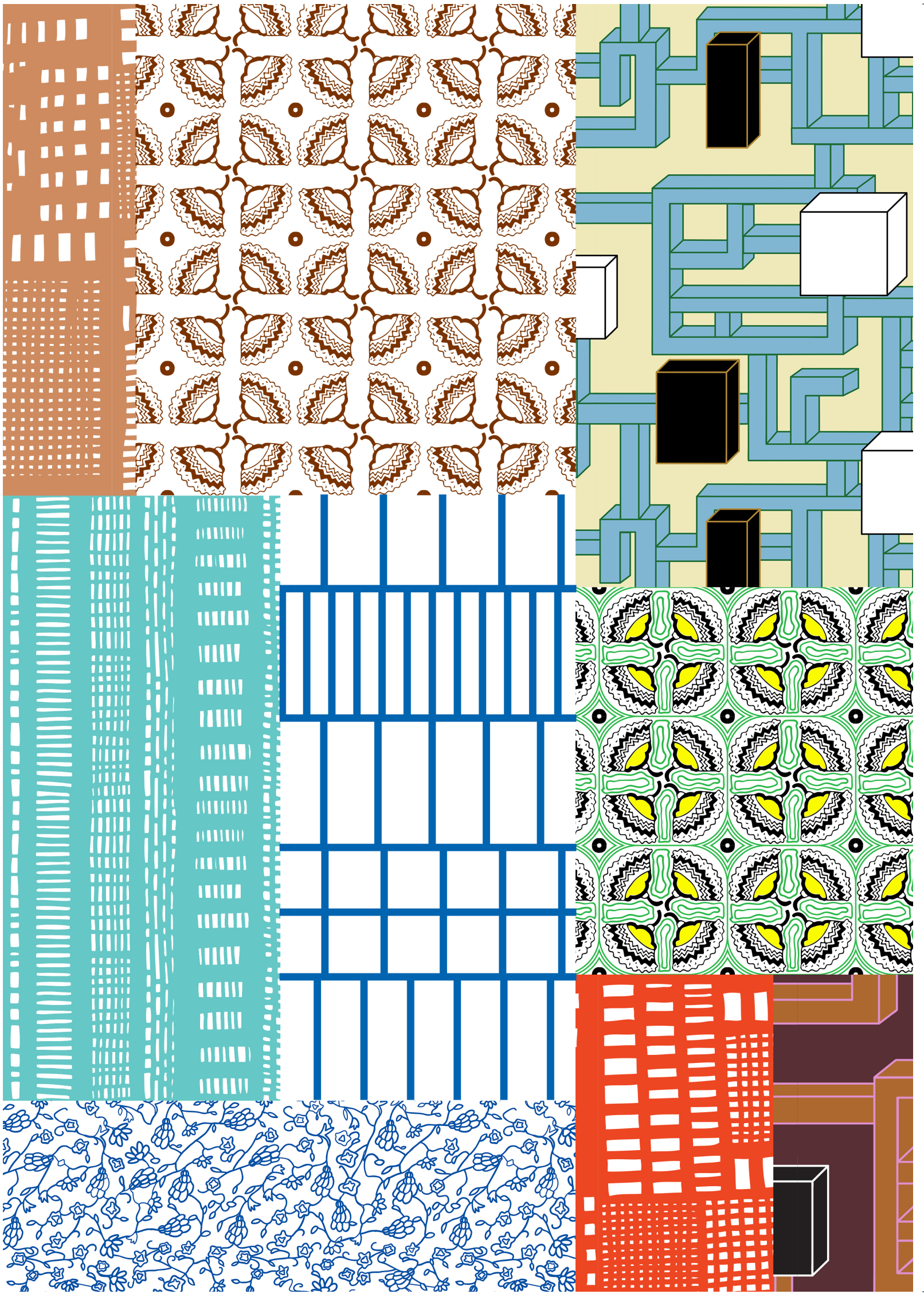
Cosmic - WP



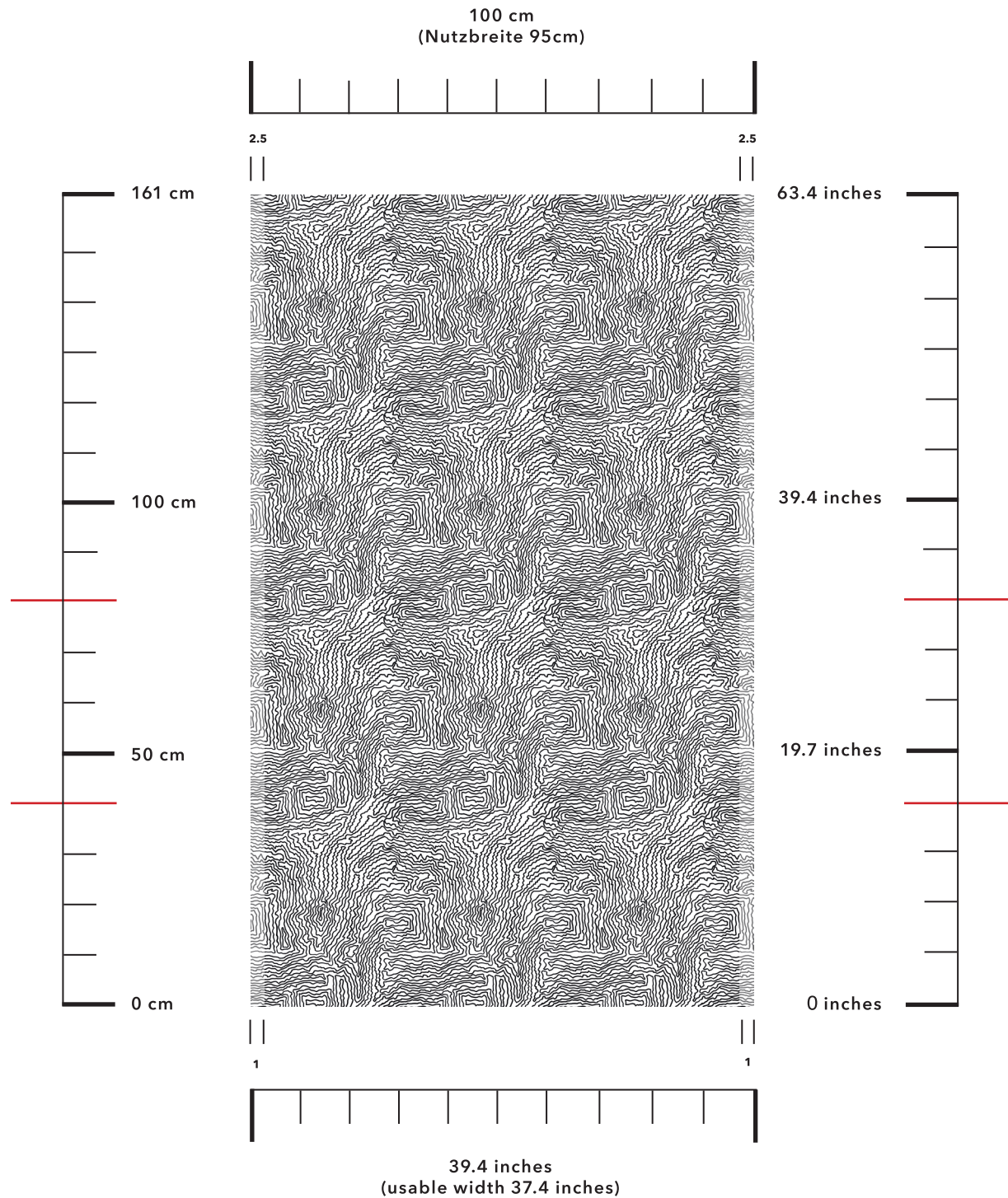
Vienna - WP



Milano - WP



Earth - WP



60% Cellulose 40% PL

Breite • Width 100 cm (95 cm) - 39.4" (37.4")

Gewicht • Weight 150 g/m² - 5.3 oz/m²

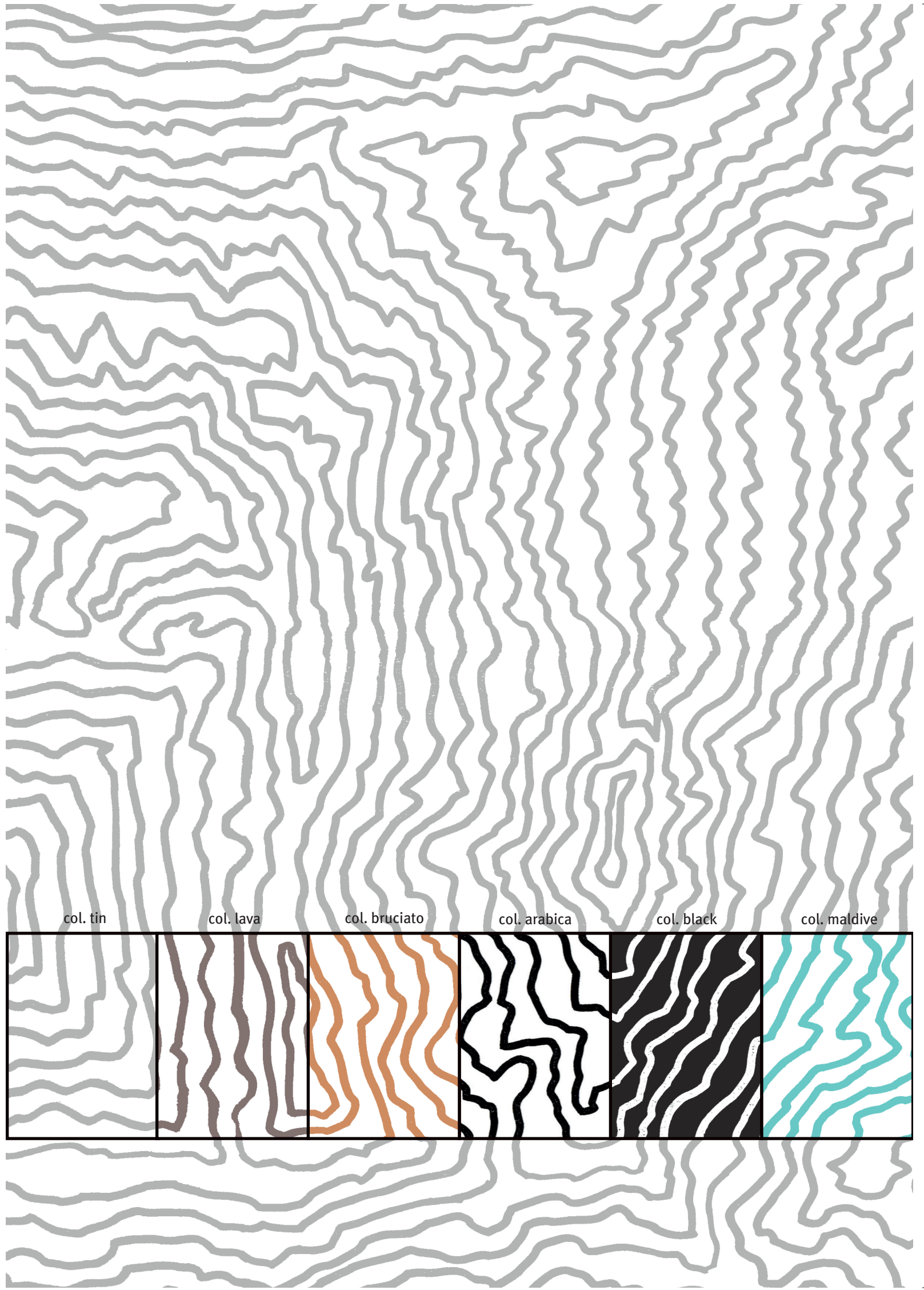
Rapport vertical • Repeat vertical 40.3 cm - 15.8"

Rapport horizontal • Repeat horizontal 95 cm - 39.4"

Anwendung: Wandtapete für direkte Anwendung - Paneele

Application: Wallcovering for direct application - Screens

FR Test: Euroclass BS1DO ASTM E 84 Class A / 1



col. tin

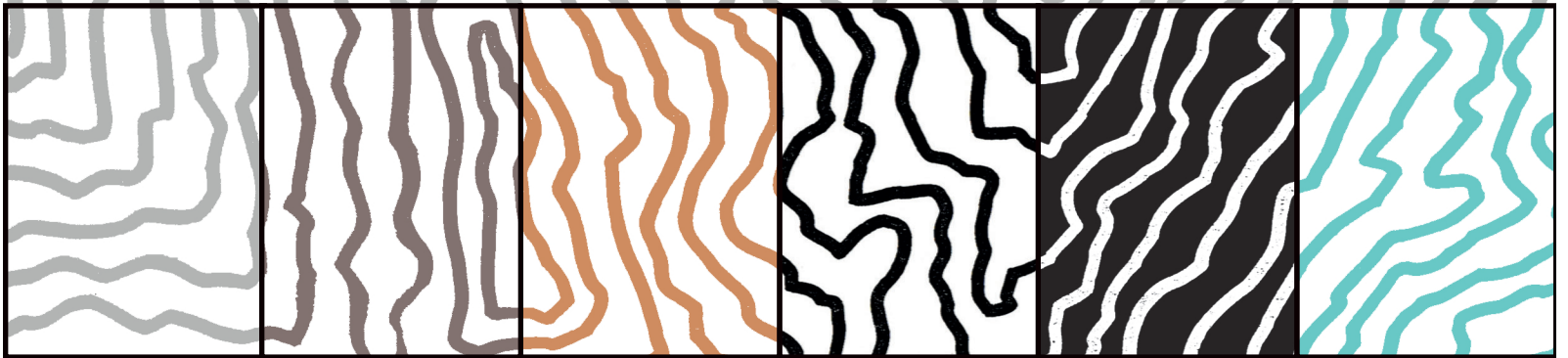
col. lava

col. bruciato

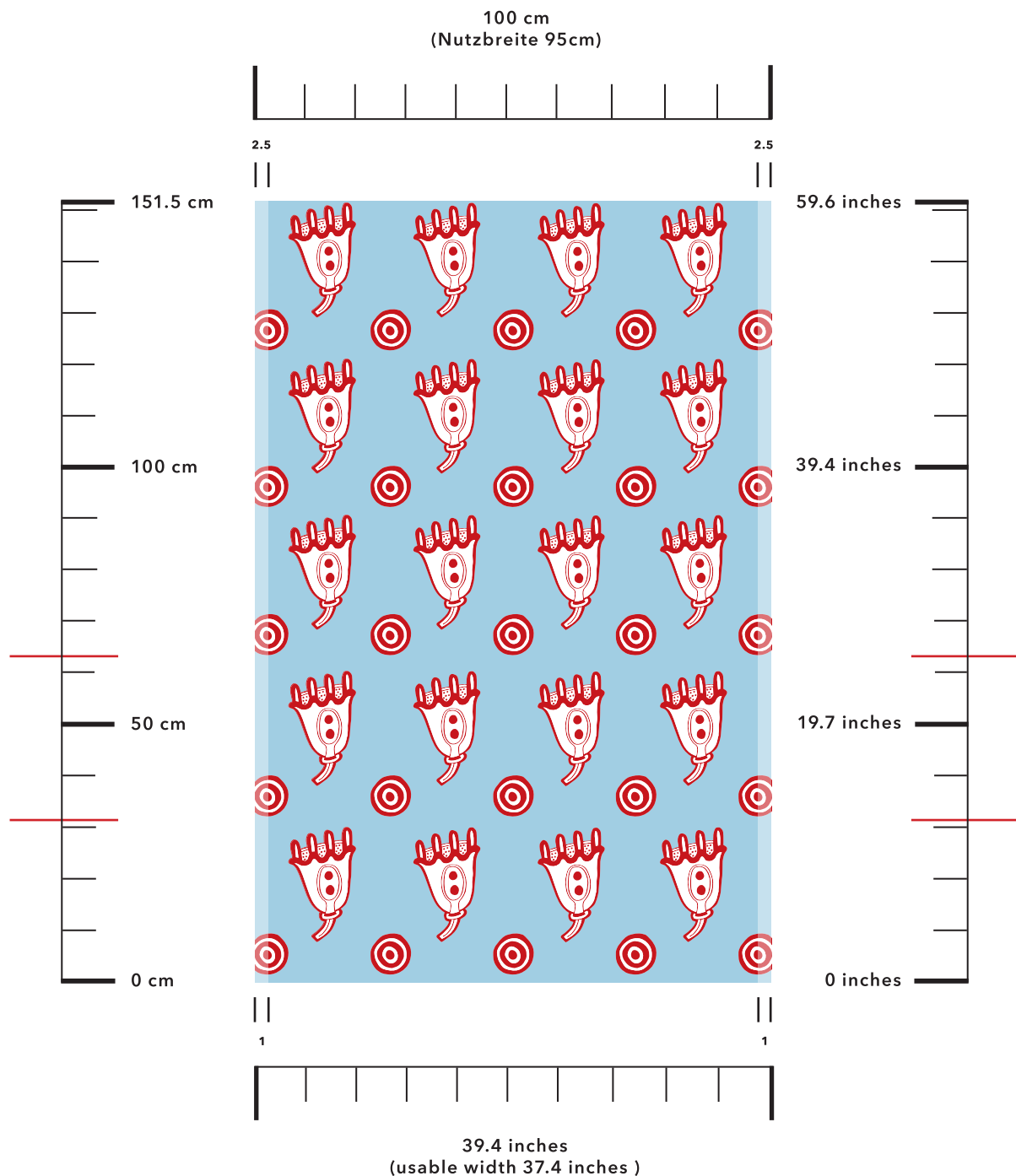
col. arabica

col. black

col. maldive



Cosmic - WP



60% Cellulose 40% PL

Breite • Width 100 cm (95 cm) - 39.4" (37.4")

Gewicht • Weight 150 g/m² - 5.3 oz/m²

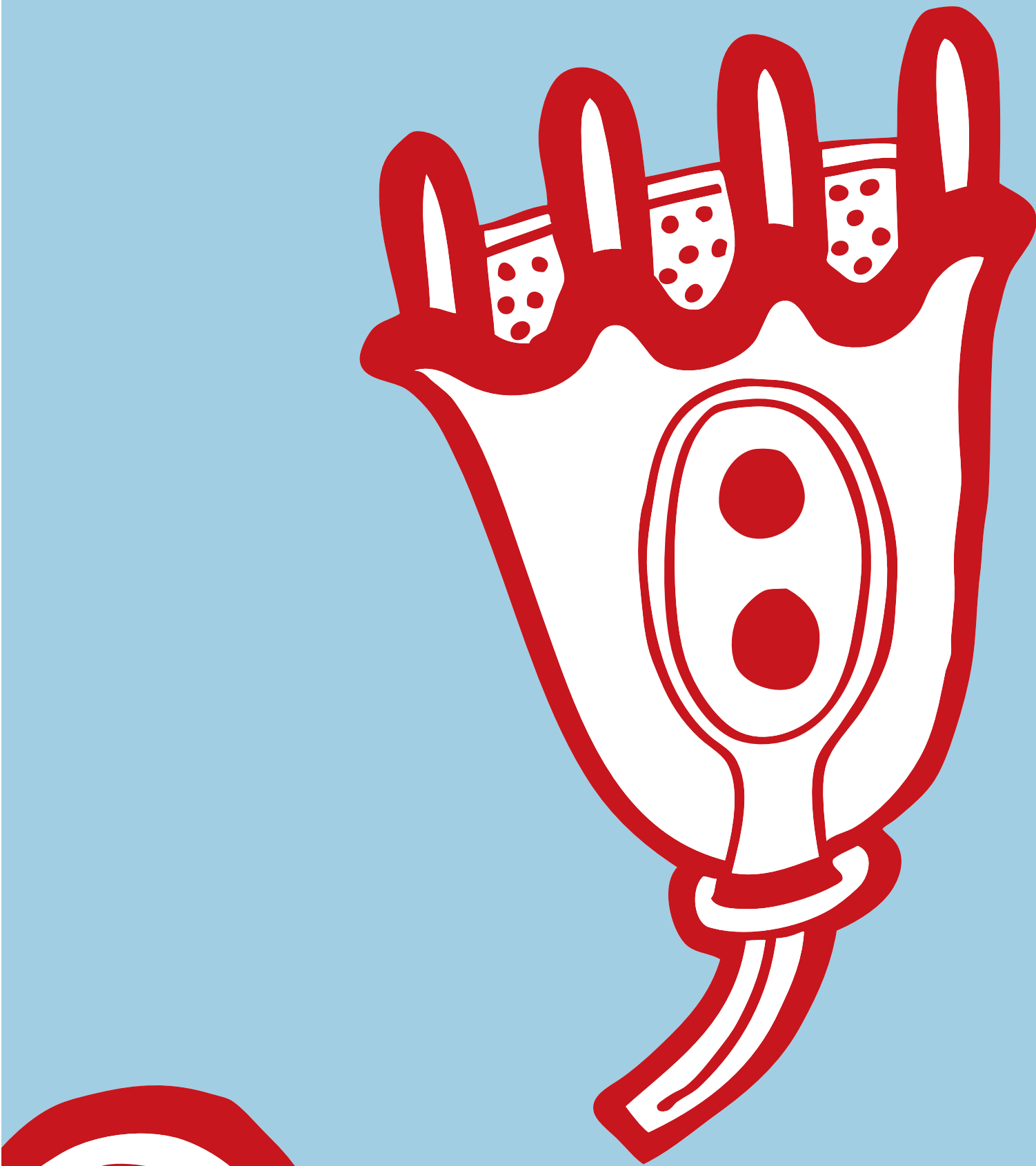
Rapport vertical • Repeat vertical 32 cm - 12.6"

Rapport horizontal • Repeat horizontal 95 cm - 39.4"

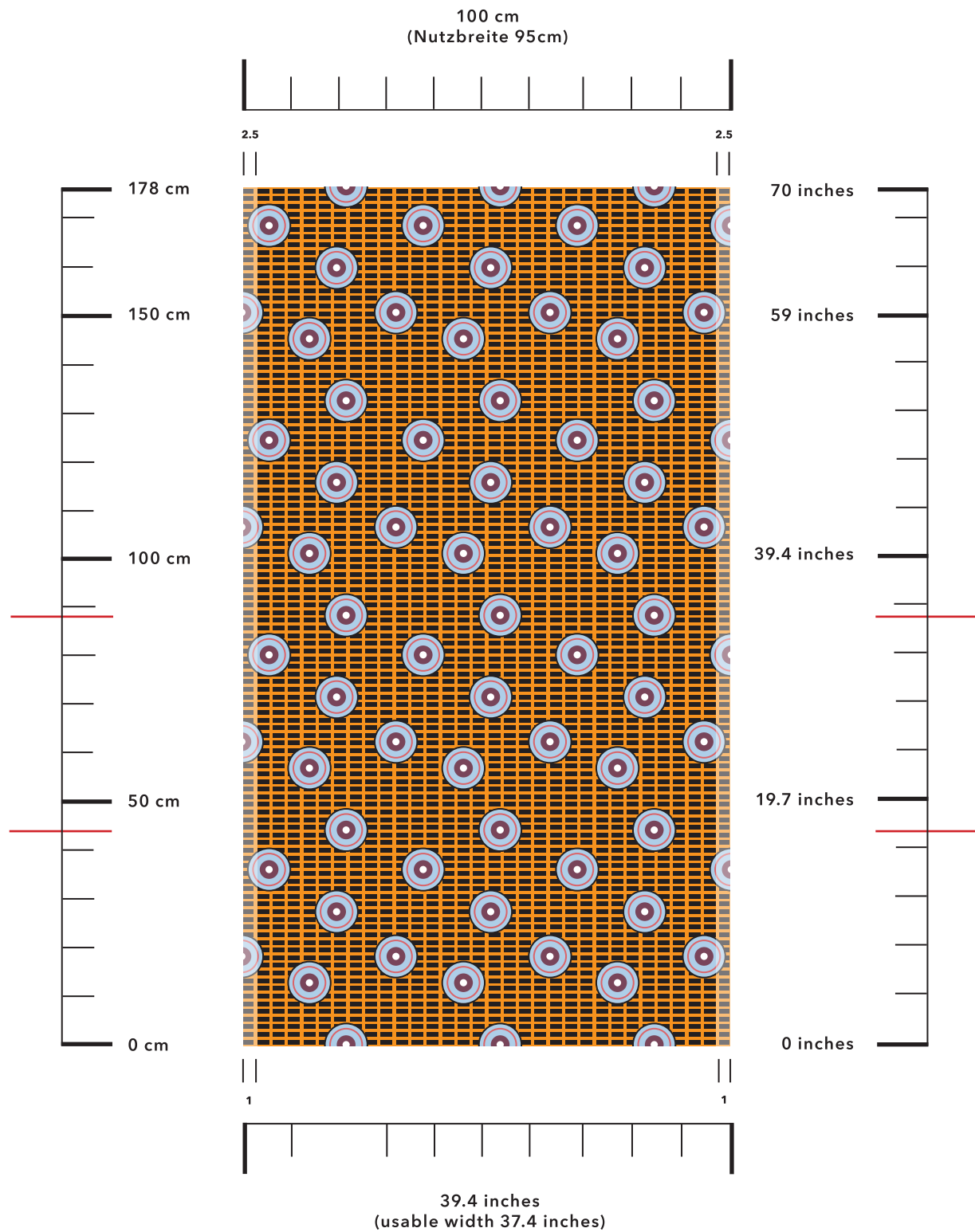
Anwendung: Wandtapete für direkte Anwendung - Paneele

Application: Wallcovering for direct application - Screens

FR Test: Euroclass BS1D0 ASTM E 84 Class A / 1



Electric Kitchen - WP



60% Cellulose 40% PL

Breite • Width 100 cm (95 cm) - 39.4" (37.4")

Gewicht • Weight 150 g/m² - 5.3 oz/m²

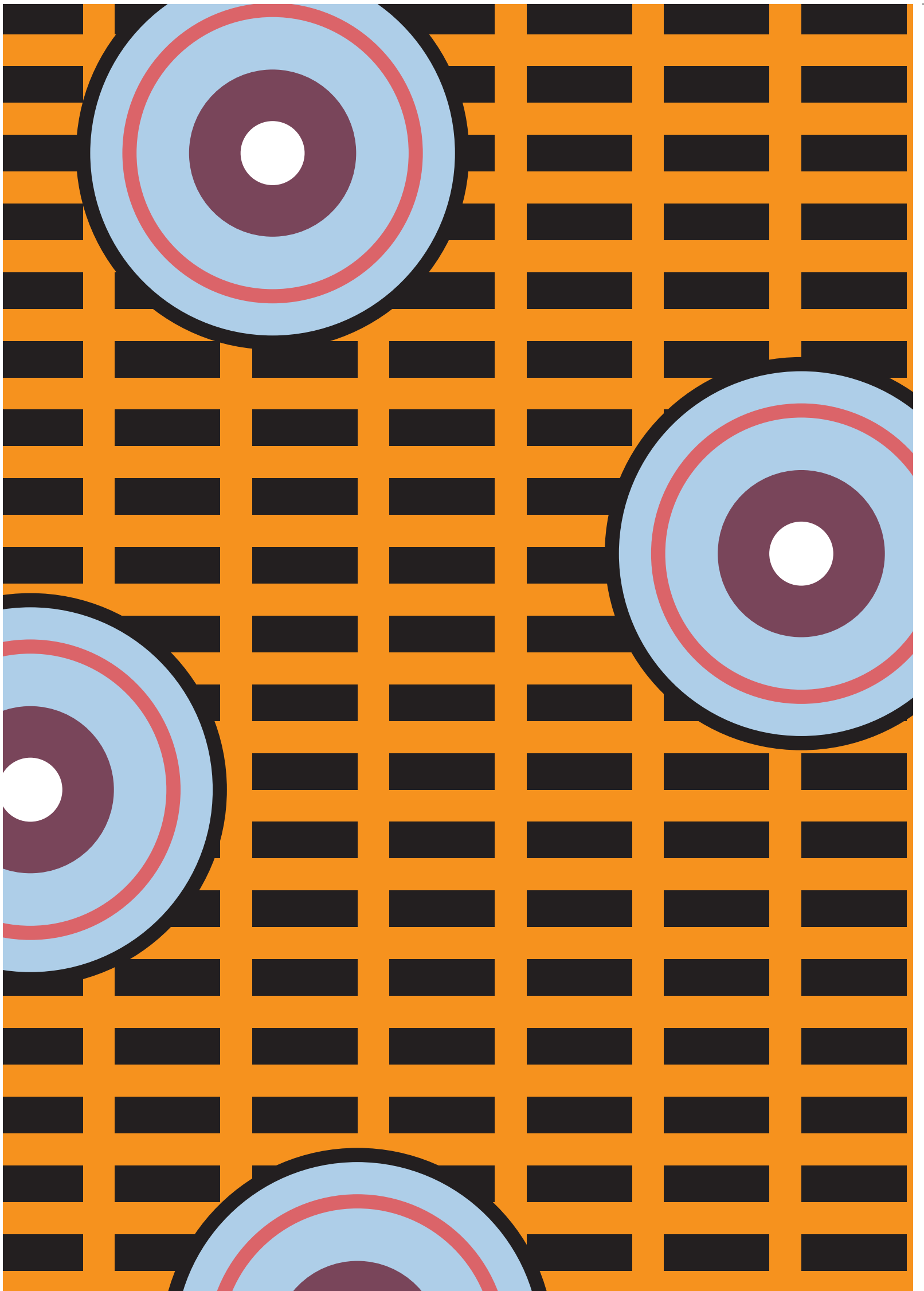
Rapport vertical • Repeat vertical 44.5 cm - 12.6"

Rapport horizontal • Repeat horizontal 95 cm - 39.4"

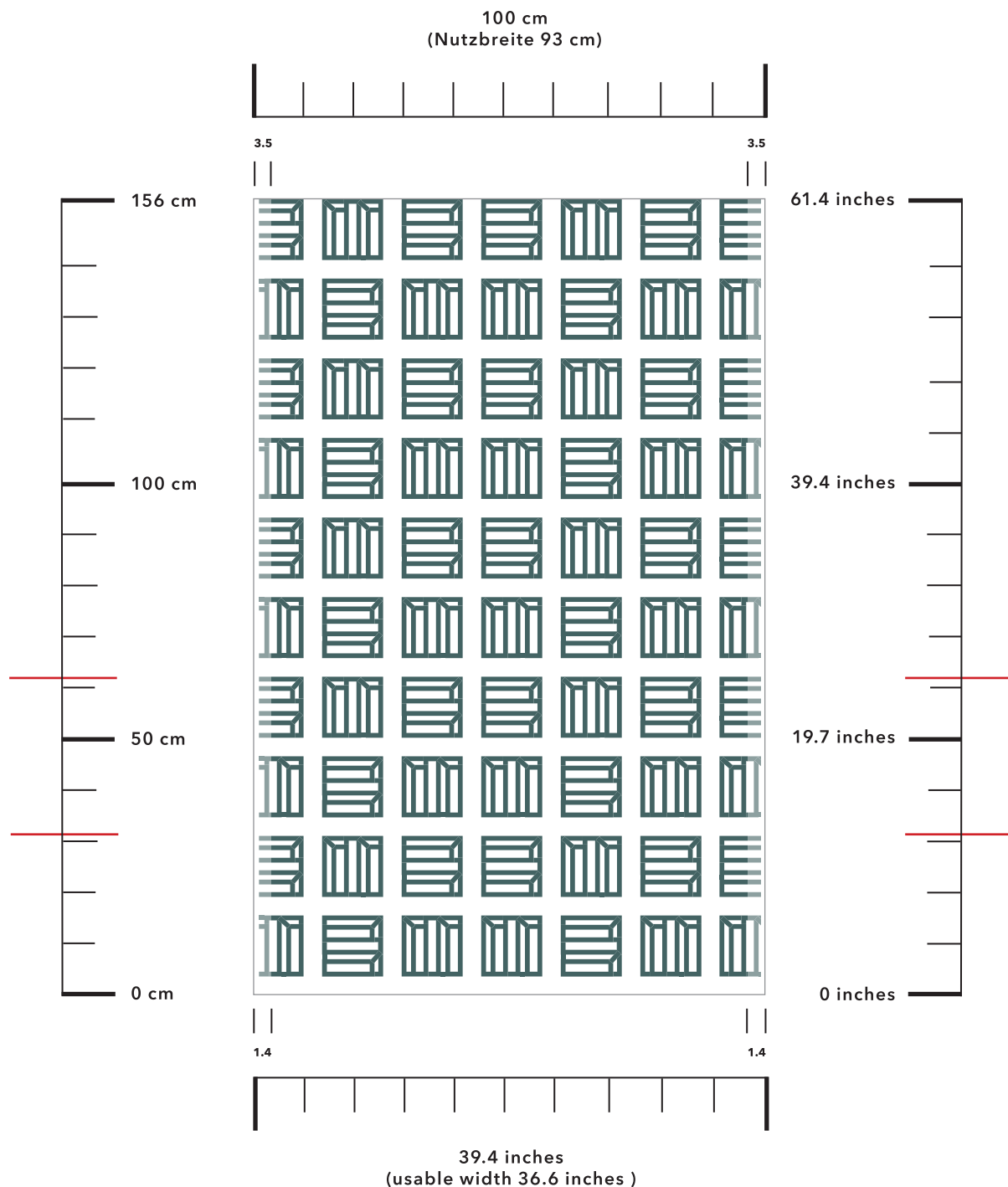
Anwendung: Wandtapete für direkte Anwendung - Paneele

Application: Wallcovering for direct application - Screens

FR Test: Euroclass BS1D0 ASTM E 84 Class A / 1



Pieces - WP



60% Cellulose 40% PL

Breite • Width 100 cm (93 cm) - 39.4" (36.6")

Gewicht • Weight 150 g/m² - 5.3 oz/m²

Rapport vertical • Repeat vertical 31.7 cm - 12.5"

Rapport horizontal • Repeat horizontal 93 cm - 36.6"

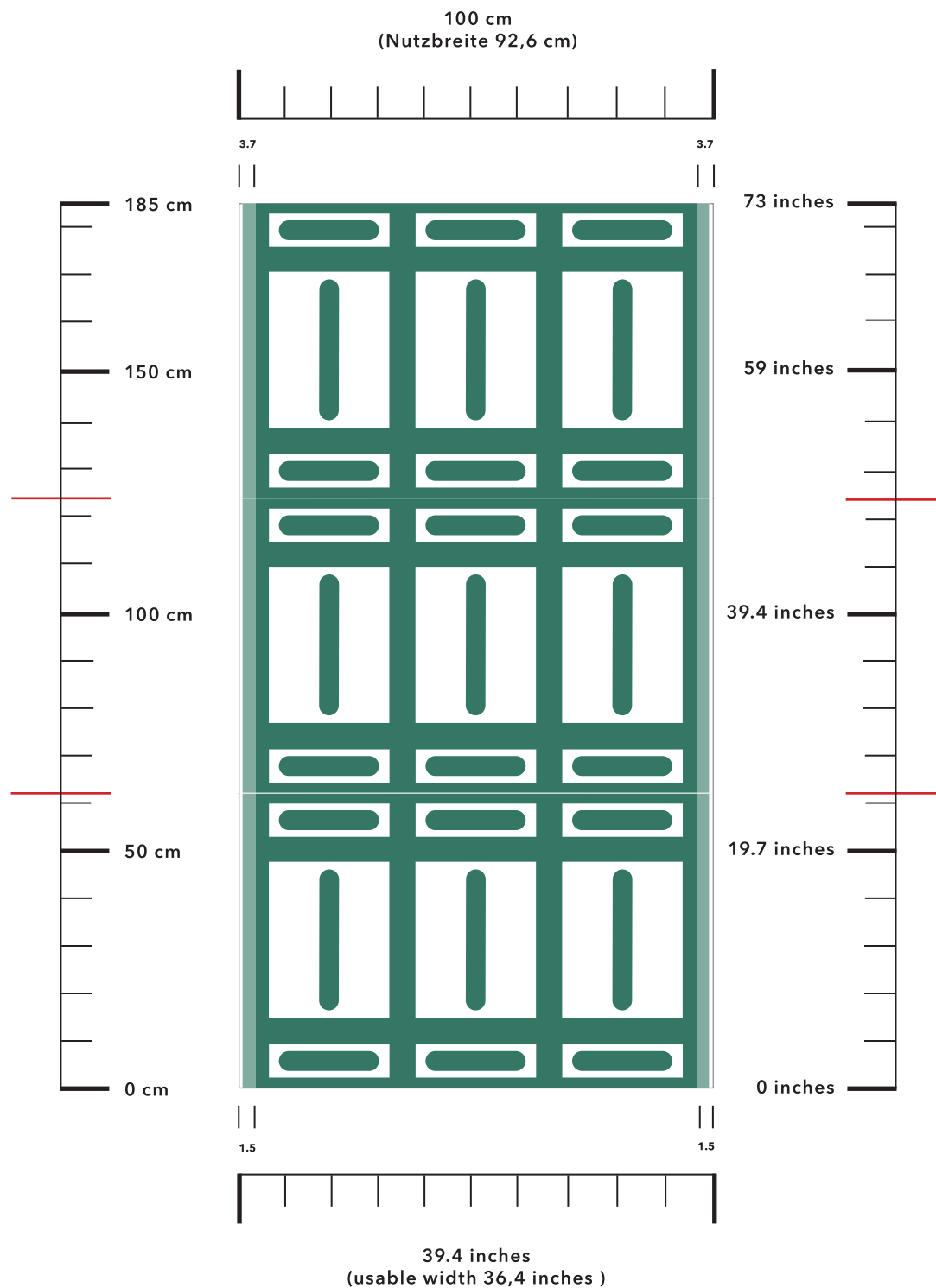
Anwendung: Wandtapete für direkte Anwendung - Paneele

Application: Wallcovering for direct application - Screens

FR Test: Euroclass BS1D0 ASTM E 84 Class A / 1



Key - WP



60% Cellulose 40% PL

Breite • Width 100 cm (92.6 cm) - 39.4" (36.4")

Gewicht • Weight 150 g/m² - 5.3 oz/m²

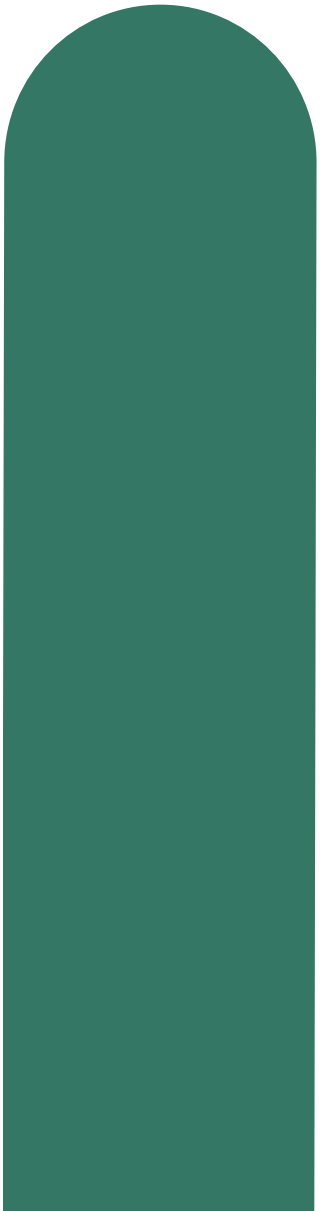
Rapport vertical • Repeat vertical 61.8 cm - 24.3"

Rapport horizontal • Repeat horizontal 92.6 cm - 36.4"

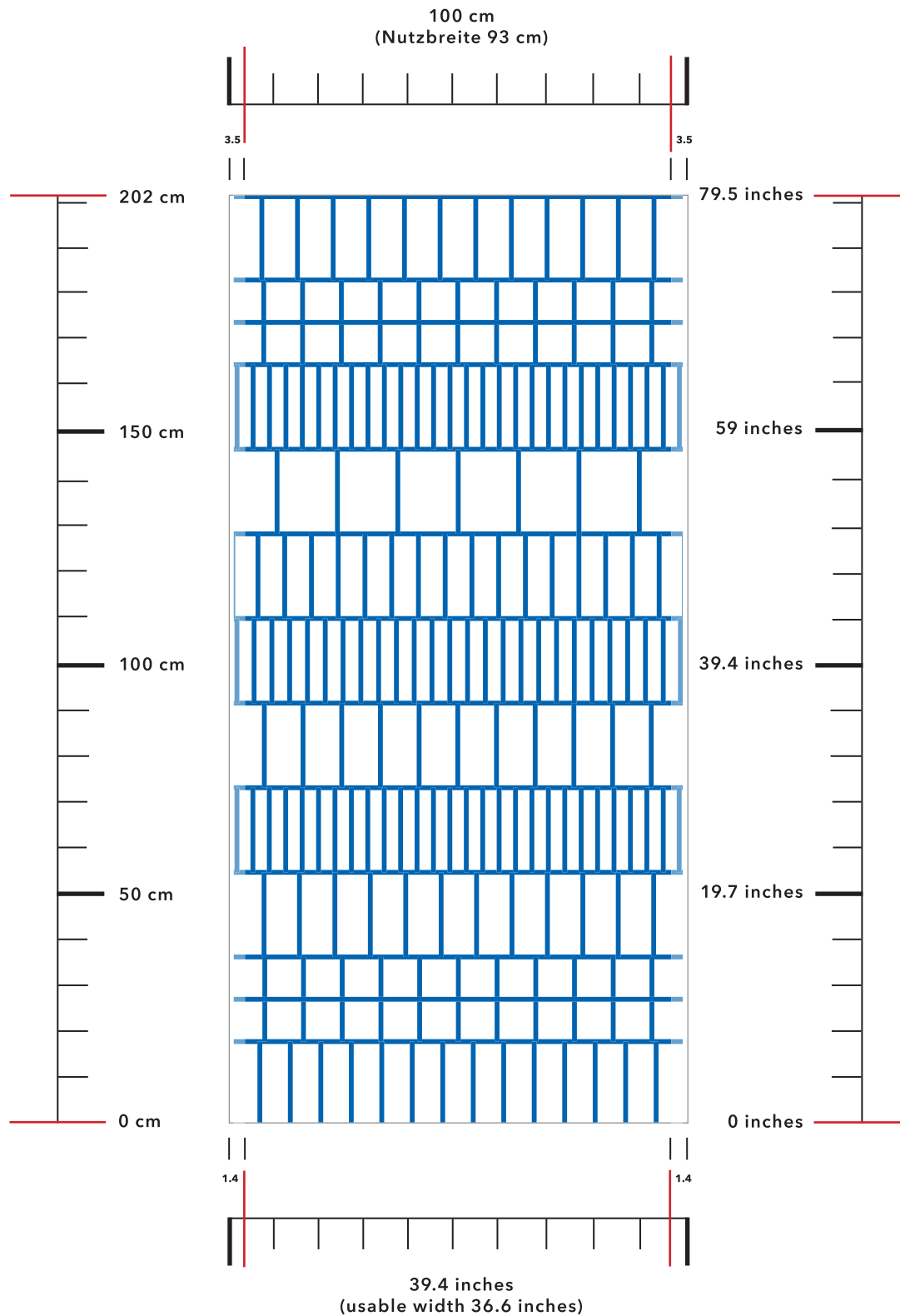
Anwendung: Wandtapete für direkte Anwendung - Paneele

Application: Wallcovering for direct application - Screens

FR Test: Euroclass BS1D0 ASTM E 84 Class A / 1



Air - WP



60% Cellulose 40% PL

Breite • Width 100 cm (93 cm) - 39.4" (36.6")

Gewicht • Weight 150 g/m² - 5.3 oz/m²

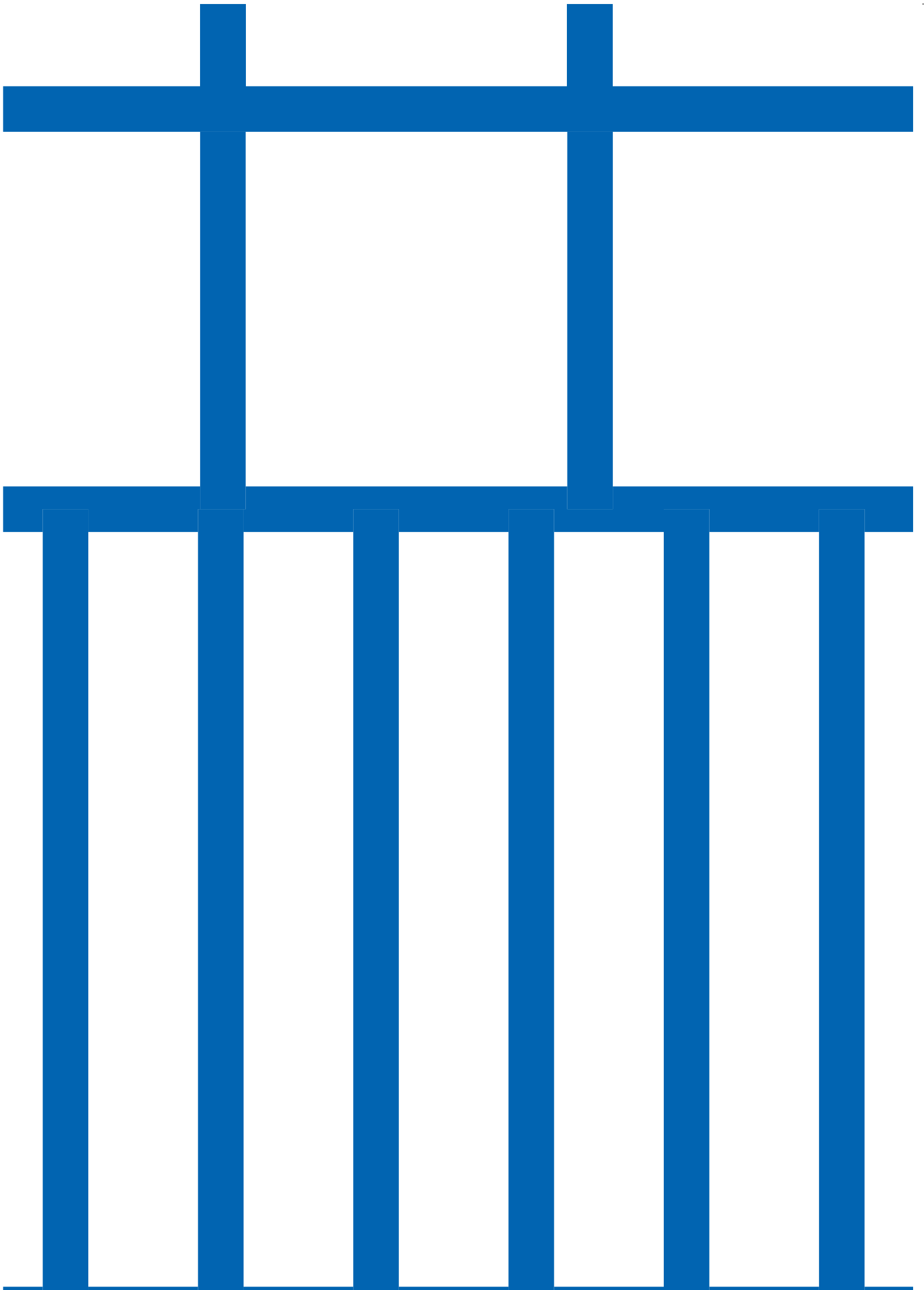
Rapport vertical • Repeat vertical 202 cm - 79.5"

Rapport horizontal • Repeat horizontal 93 cm - 36.6"

Anwendung: Wandtapete für direkte Anwendung - Paneele

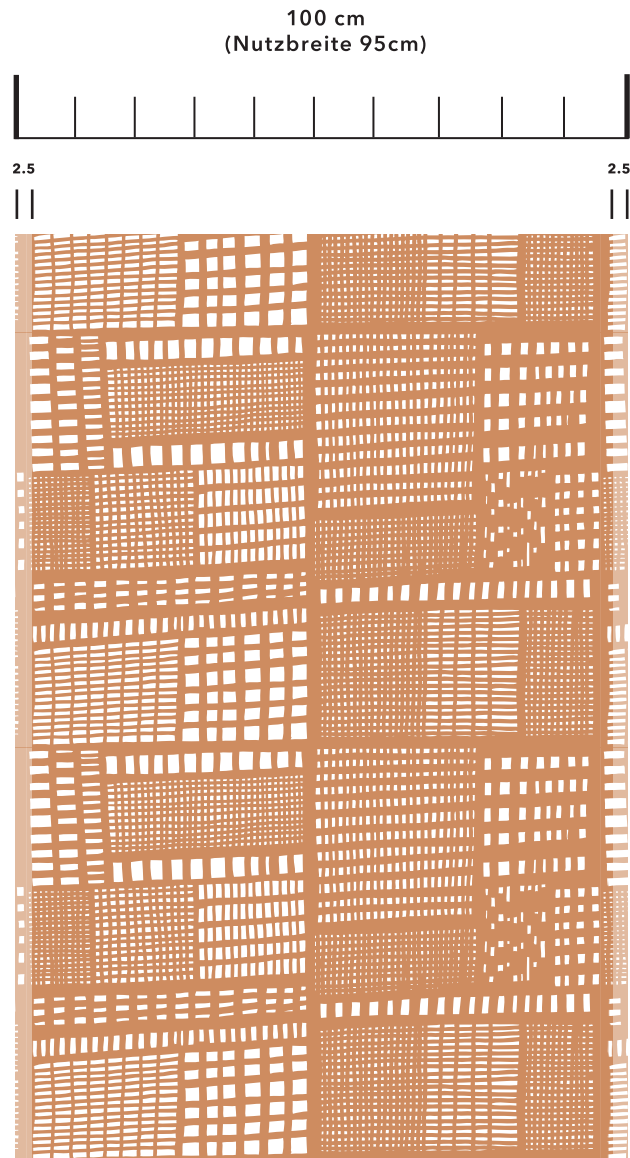
Application: Wallcovering for direct application - Screens

FR Test: Euroclass BS1DO ASTM E 84 Class A / 1





Assab One - WP



60% Cellulose 40% PL

Breite • Width 100 cm (94.4 cm) - 39.4" (37.2")

Gewicht • Weight 150 g/m² - 5.3 oz/m²

Rapport vertical • Repeat vertical 47 cm - 18.5"

Rapport horizontal • Repeat horizontal 94.4 cm - 37.2"

Anwendung: Wandtapete für direkte Anwendung - Paneele

Application: Wallcovering for direct application - Screens

FR Test: Euroclass BS1DO ASTM E 84 Class A / 1



4spaces